

MAIRIE DE PARIS



PIONEERED BY THE  
ROCKEFELLER FOUNDATION

100

RESILIENT CITIES

# Paris resilience strategy



# Who is the Chief Resilience Officer?

The CRO is a catalytic force, transforming the way cities organize themselves to better meet the challenges of building resilience in the 21st century. The CRO will lead the city's resilience building efforts, including:



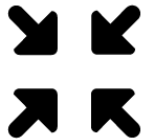
**Working across silos** to **create** and **implement** a resilience strategy



Serving as **a senior advisor** to the Mayor or municipal leader



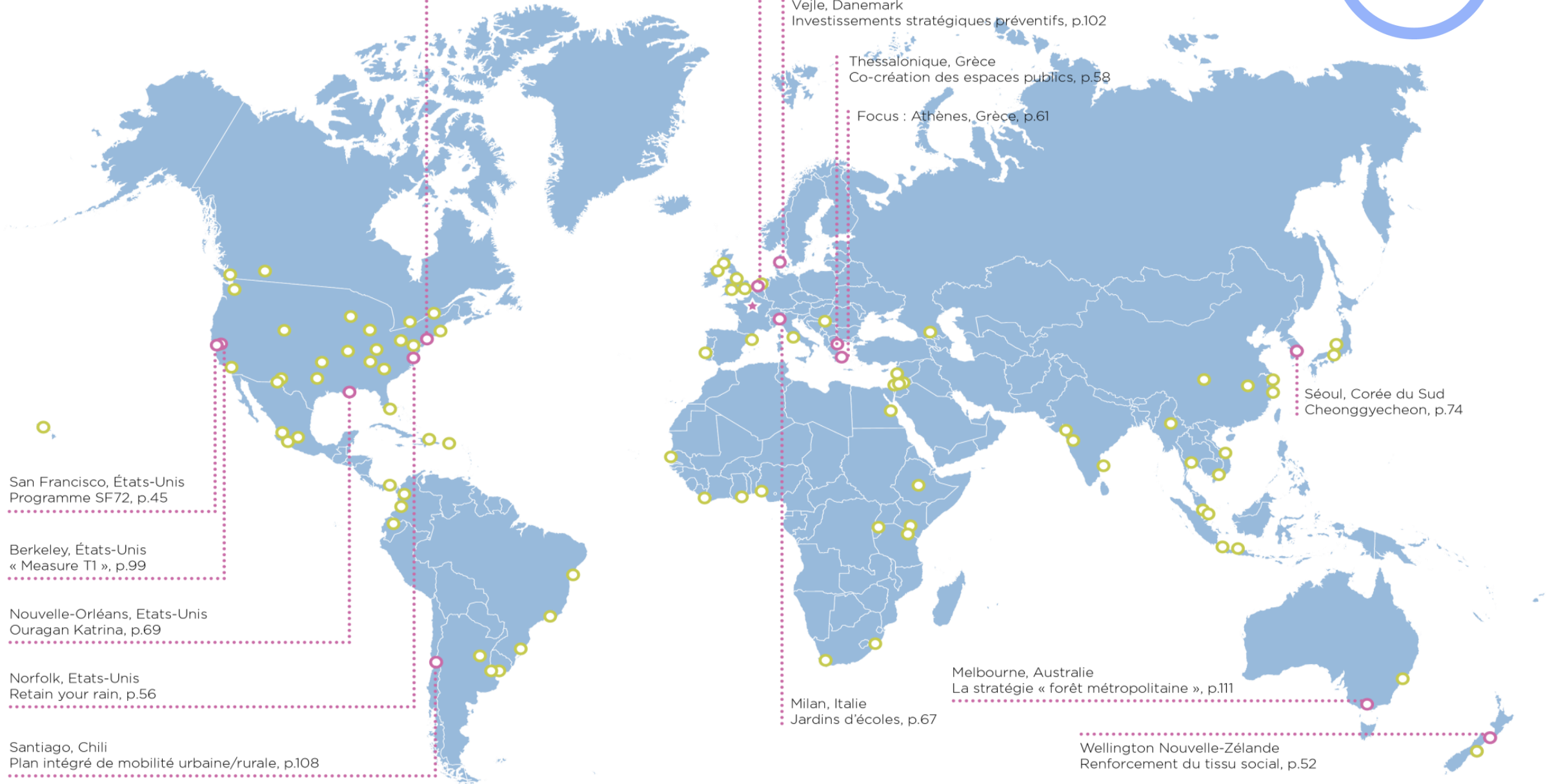
Promoting resilience thinking, and acting as both **a local and global thought leader**



**Coordinating** resilience efforts across government and multi-sector stakeholders



**Liaising** with other **CROs, 100RC staff, and service providers** via the network and platform



New York, États-Unis  
CERT, p.43  
Community schools, p.47

Rotterdam, Pays-Bas  
Water squares, p.77

Copenhague, Danemark  
Tåsinge Plads, p.80

Vejle, Danemark  
Investissements stratégiques préventifs, p.102

Thessalonique, Grèce  
Co-crédation des espaces publics, p.58

Focus : Athènes, Grèce, p.61

San Francisco, États-Unis  
Programme SF72, p.45

Berkeley, États-Unis  
« Measure T1 », p.99

Nouvelle-Orléans, États-Unis  
Ouragan Katrina, p.69

Norfolk, États-Unis  
Retain your rain, p.56

Santiago, Chili  
Plan intégré de mobilité urbaine/rurale, p.108

Milan, Italie  
Jardins d'écoles, p.67

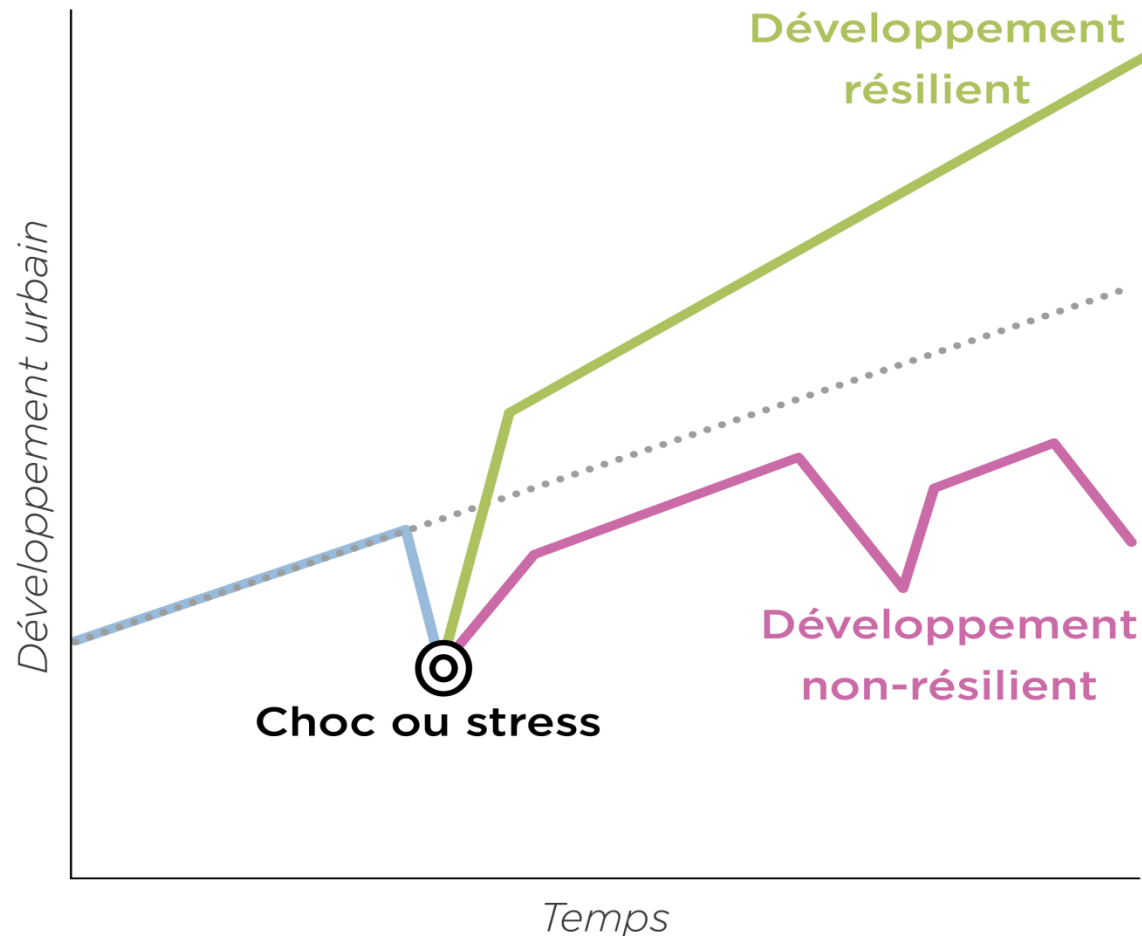
Melbourne, Australie  
La stratégie « forêt métropolitaine », p.111

Wellington Nouvelle-Zélande  
Renforcement du tissu social, p.52

Séoul, Corée du Sud  
Cheonggyecheon, p.74



# Urban resilience



*The capacity of individuals, communities, institutions, businesses and systems within a city to survive, adapt and grow no matter what kinds of acute shocks and chronic stresses they experience*





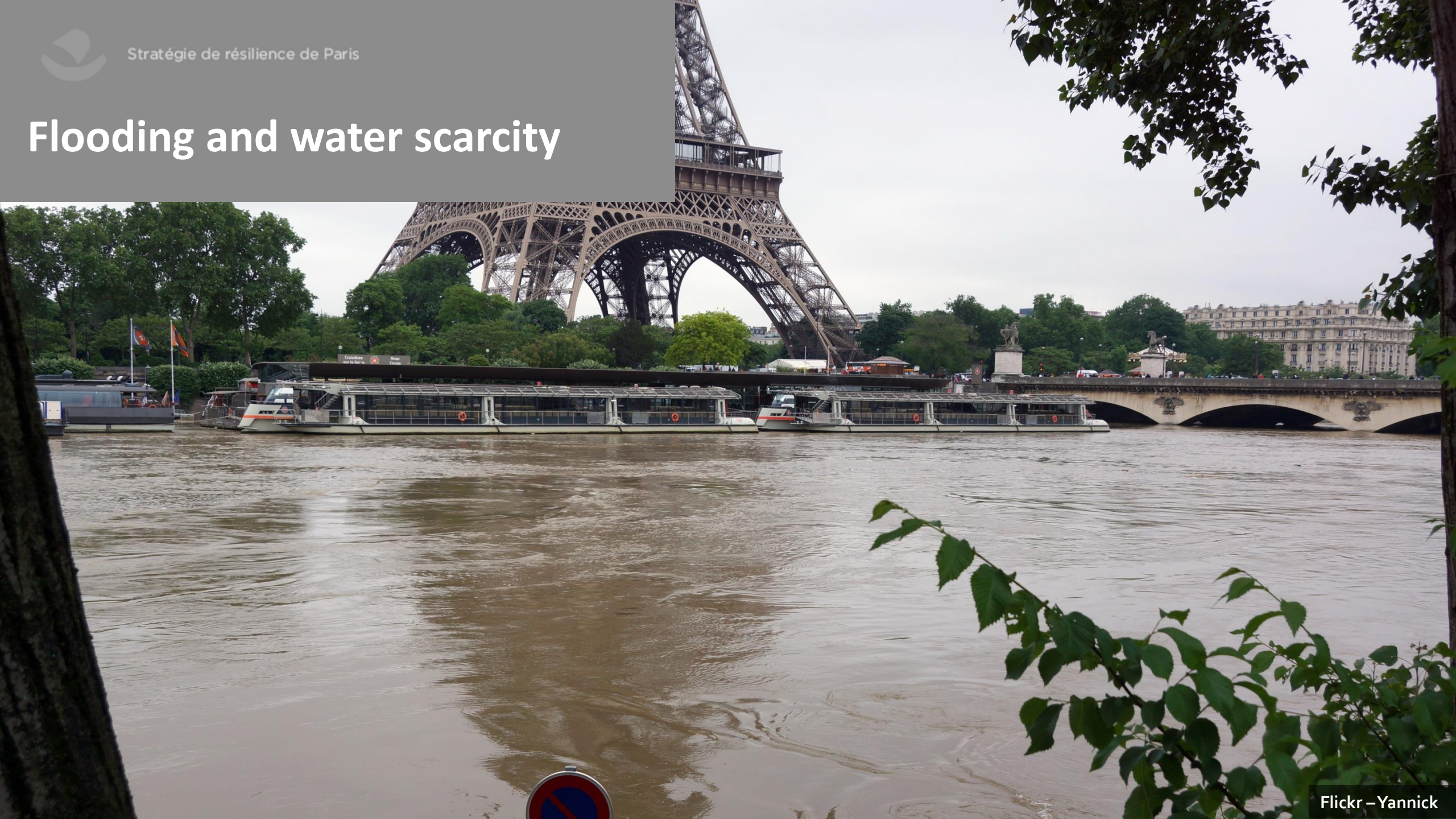
# Inequality and exclusion







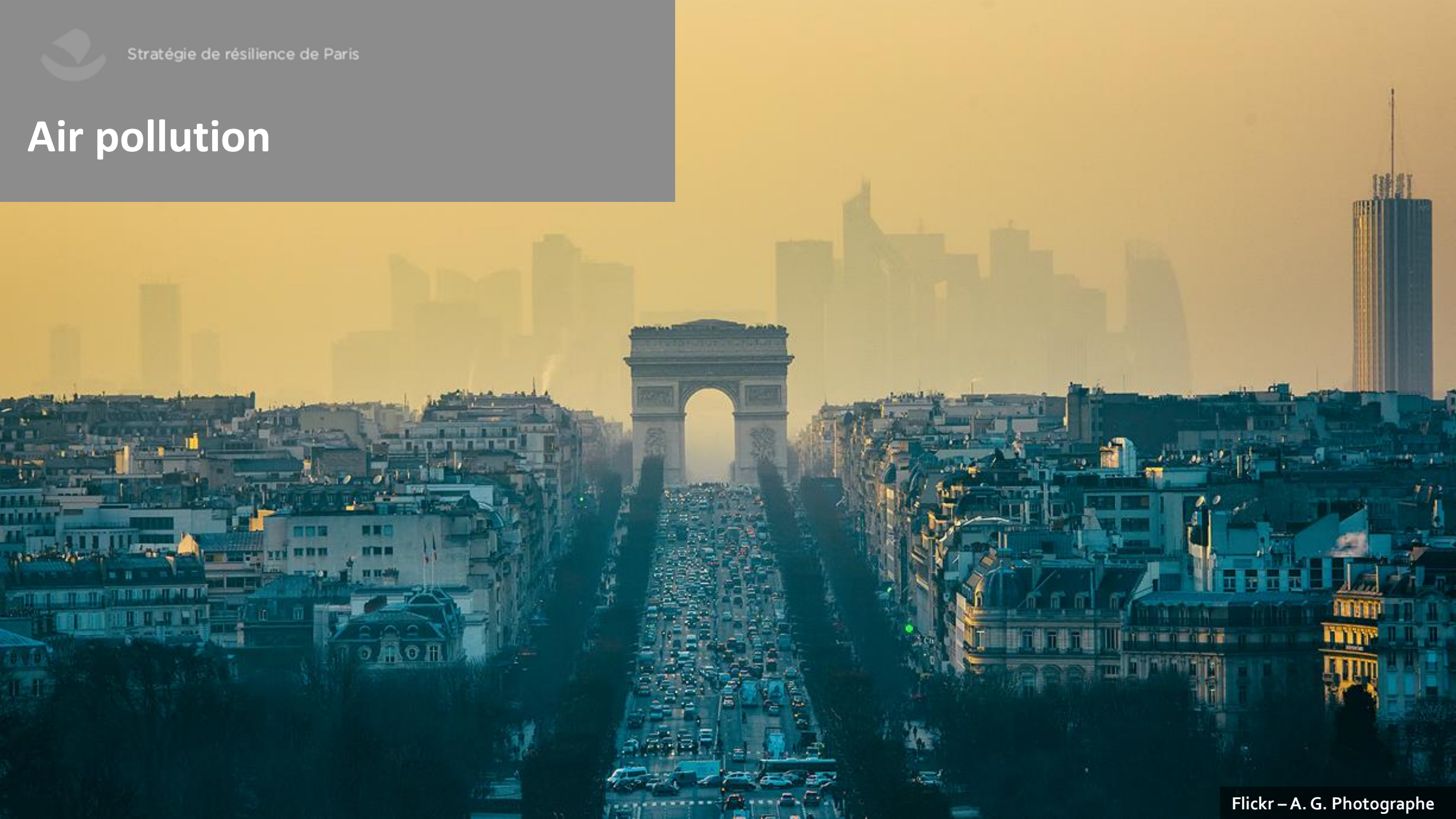
# Flooding and water scarcity







# Air pollution







Stratégie de résilience de Paris

# Terrorism and security







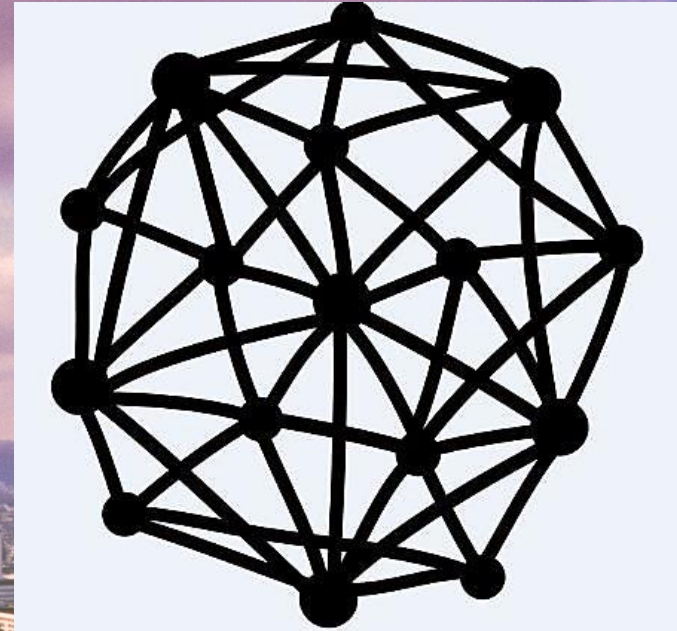
# Climate change







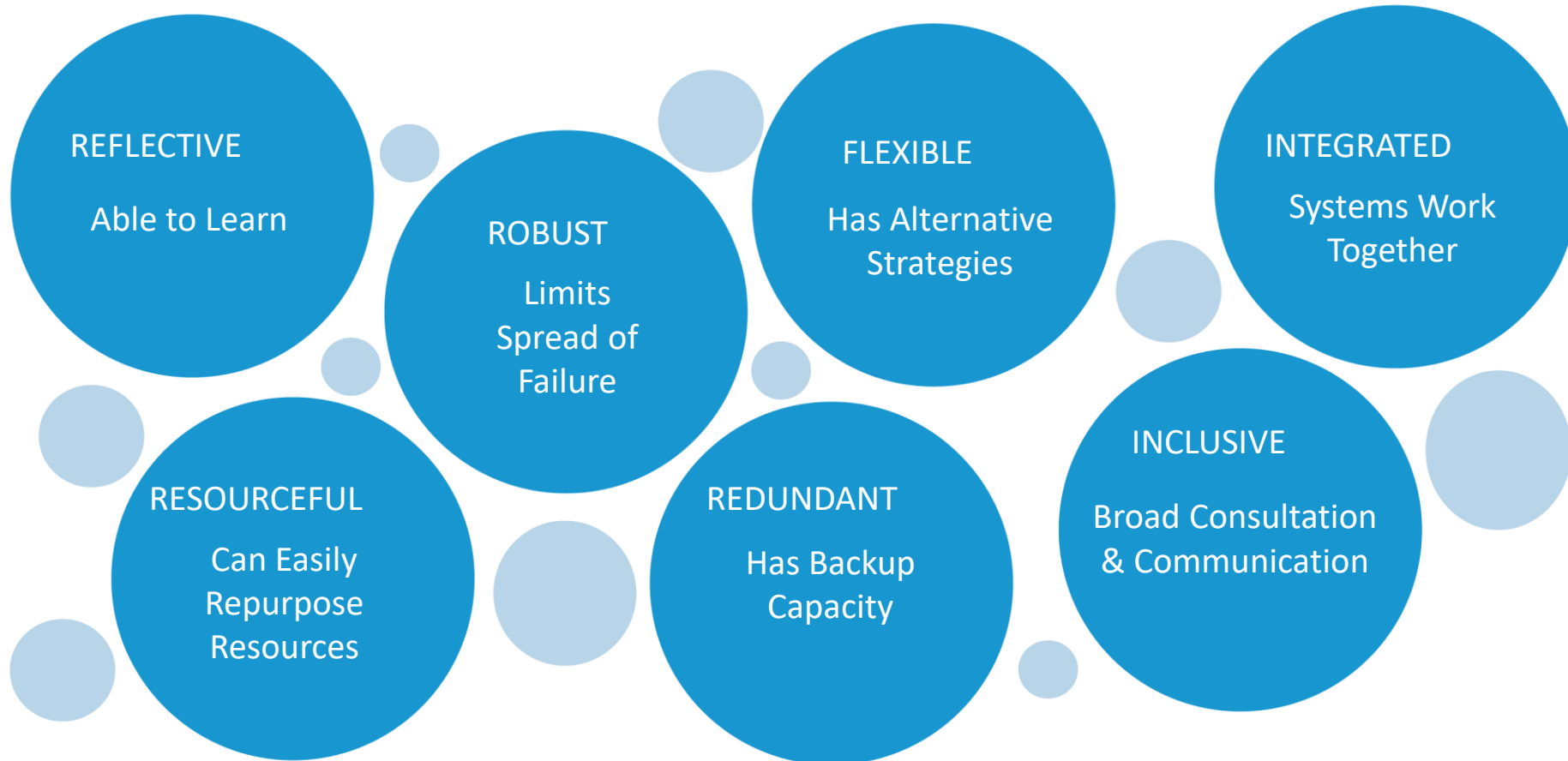
# Governance



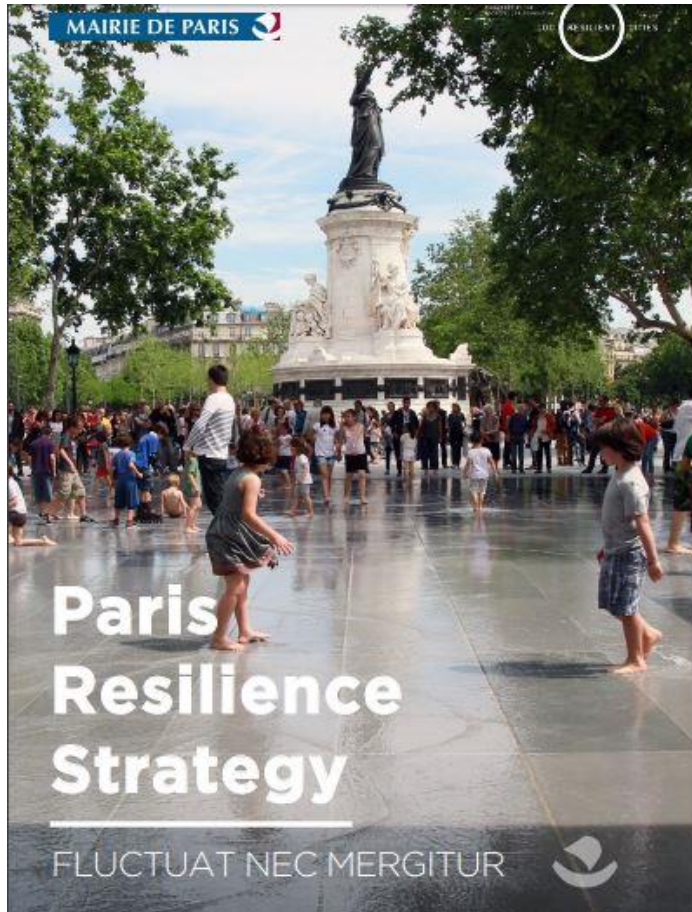


# Qualities of resilient systems

Resilient systems exhibit certain qualities that enable them to withstand, respond, and adapt more readily to shocks and stresses.



To download: [paris.fr/parisresilient](https://paris.fr/parisresilient)



PARIS



MAIRIE DE PARIS



PIONEERED BY THE  
ROCKEFELLER FOUNDATION

100

RESILIENT

CITIES

# Vision

A city that relies on its residents, adapts its infrastructure, mobilizes its collective intelligence and the territories that surround it to turn the challenges of the century into opportunities



# A strategy rooted in existing plans to strengthen and better articulate ongoing processes





# Pillar 1

**An inclusive and  
cohesive city that builds  
on the strength of  
Parisian residents to  
become more resilient**



## Goals:

- A. Prepare young and old to cope with acute shocks and daily stresses
- B. Create conditions that encourage kindness among neighbours and inclusion at the neighbourhood level
- C. Enable residents to co-create the city of tomorrow



## Action 1

Create residents volunteers networks, mobilized in case of major shock as well as on a daily basis





## Action 5

Demultiply daily solidarity by facilitating the connection between people wishing to engage and those in need of help





# Pillar 2

A city built and developed to  
meet the challenges  
for the next century



Goals:

- A. Anticipate risks and adapt infrastructure
- B. Design infrastructure that creates multiple benefits
- C. Promote resilient urbanism in a dense city





## Action 10

Transform schoolyards into « cool oases »





## Action 17

Adapt the public facilities to the main challenges : flexibility and modularity for multiples uses



© Clément GUIII LAUME photographe

ANYOJI BELTRANDO - TER - ALPHAVILLE - EVP - ALTO - MDETE



# Pillar 3

A city in transition that mobilises its collective intelligence, adapts its operations, and cooperates with its surrounding territories



## Goals:

- A. Mobilize collective intelligence and resources
- B. Ensure the continuity of the public service and the resilience of the administration
- C. Cooperate with other territories to initiate transitions





# Action 28

Orienting municipal investments, public service contracts and public procurement to resilience through new indicators





## Action 31

Build new territorial cooperations with peri-urban and rural municipalities, around common interests and partnership actions





Thank you for  
your attention

NOT AFRAID