

# THE ROLE OF THE STATE IN THE 21st CENTURY: CHALLENGES FOR PUBLIC MANAGEMENT

Keynote Session 5

Progress and challenges for social  
development in Brazil

**Tiago Falcão**

September, 2015



# Constituição Federal de 1988

---

## Fundamental objective of the Republic

“To eradicate poverty and substandard living conditions and to reduce social and regional inequalities ”

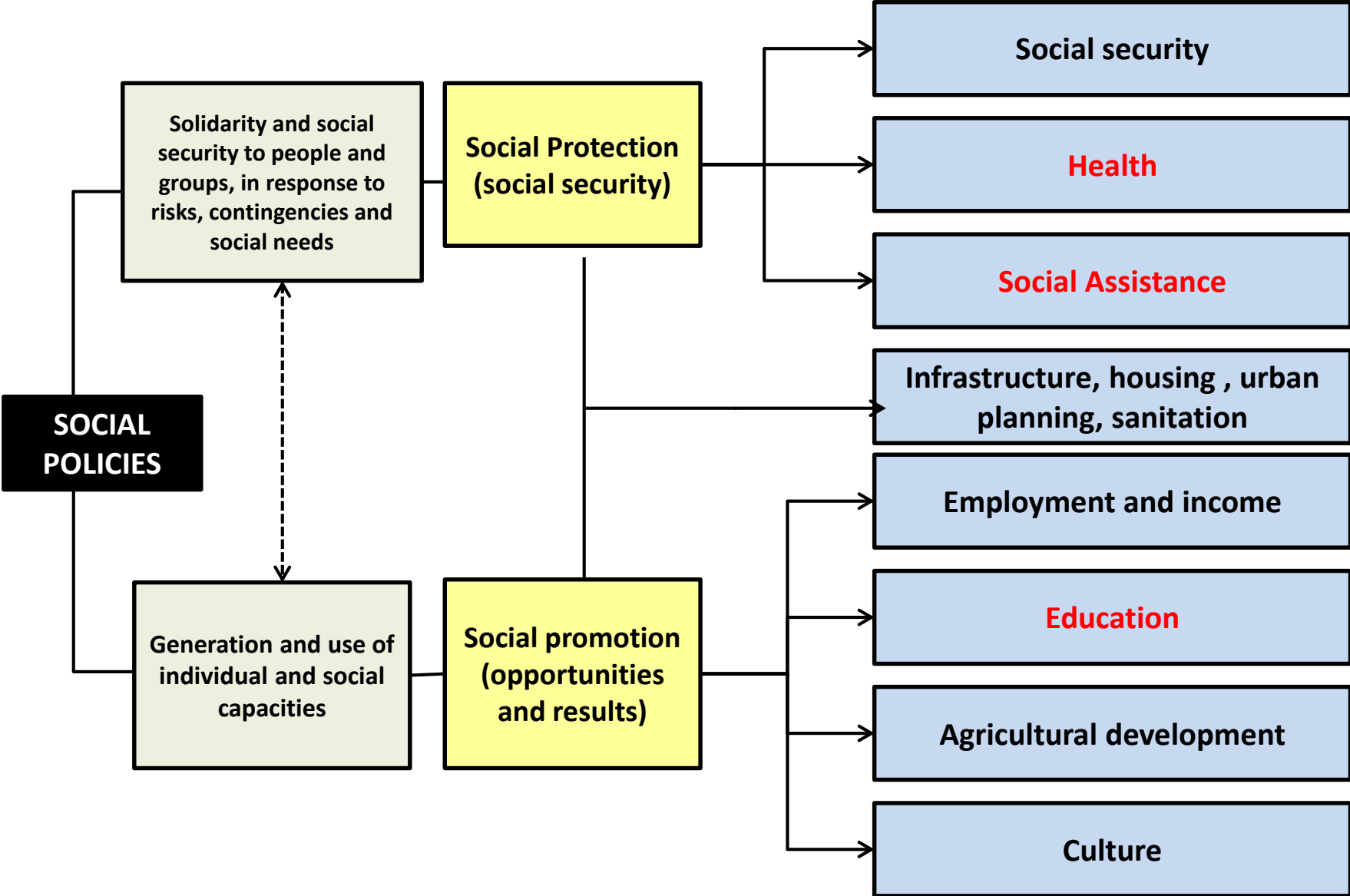
## Social Rights

Health, education, work, housing, leisure, security, social security, protection of motherhood and childhood, and assistance to the destitute

## Main Guidelines

- universality of coverage and service
- uniformity and equivalence of benefits and services for rural and urban populations
- equitable participation in funding
- diversity of the financing basis
- management decentralization
- social participation

**SECTOR POLICIES**



# Social Benefits (coverage)

## Types of Benefits

Contributory

Non-Contributory

INACTIVES\*

ACTIVES\*

- ✓ Old-age pension and disability
- ✓ Aid for occupational accidents and diseases

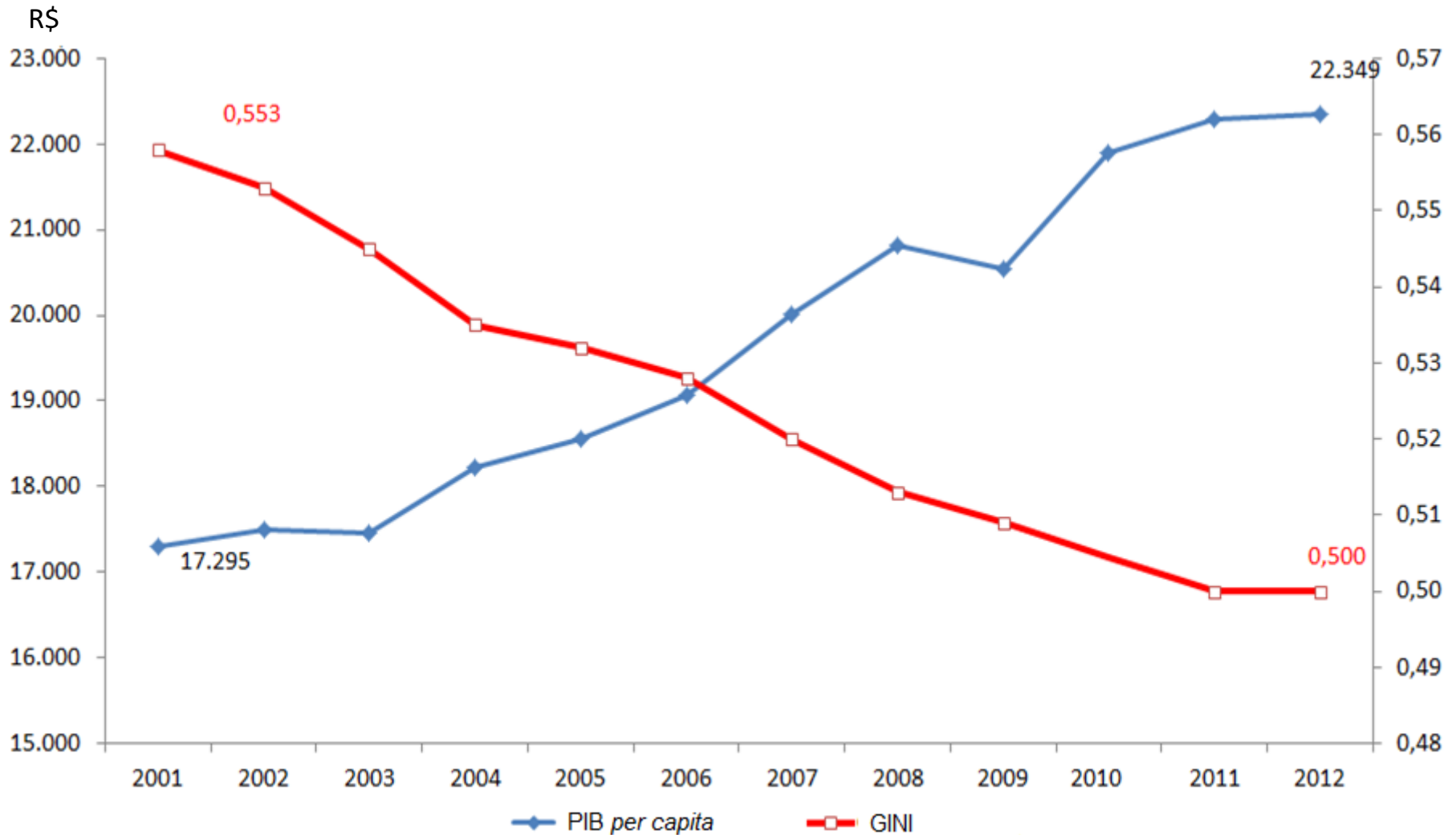
Unemployment Insurance

Social Assistance Benefits (age, physical disability)

***Bolsa Família***  
**Program**  
(Conditional cash transference)

(\*) Inactive or active in the job market

# Real GDP *per capita*\* and Gini Index\*\*

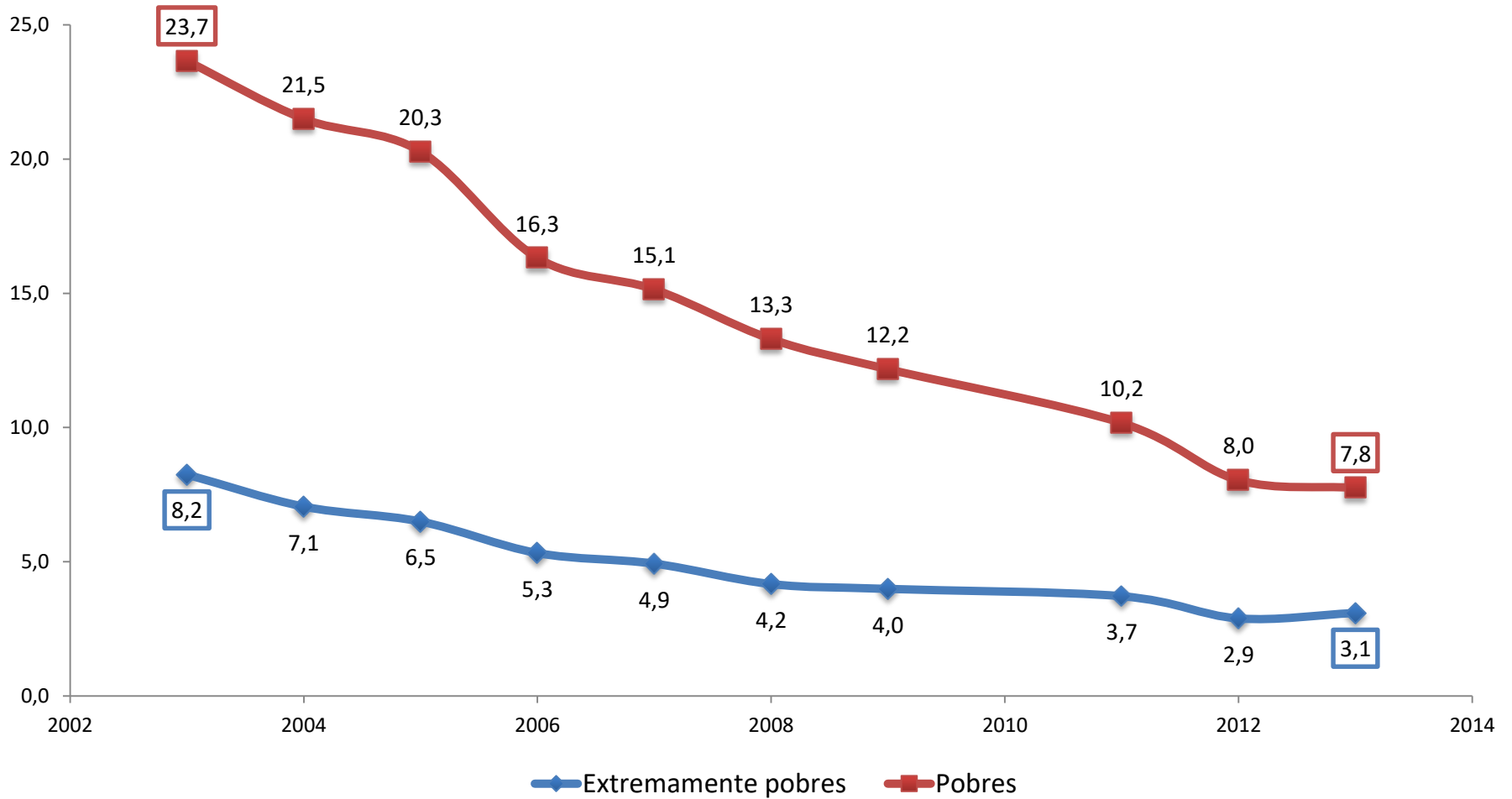


\* Values adjusted by GDP deflator ( 2012) .

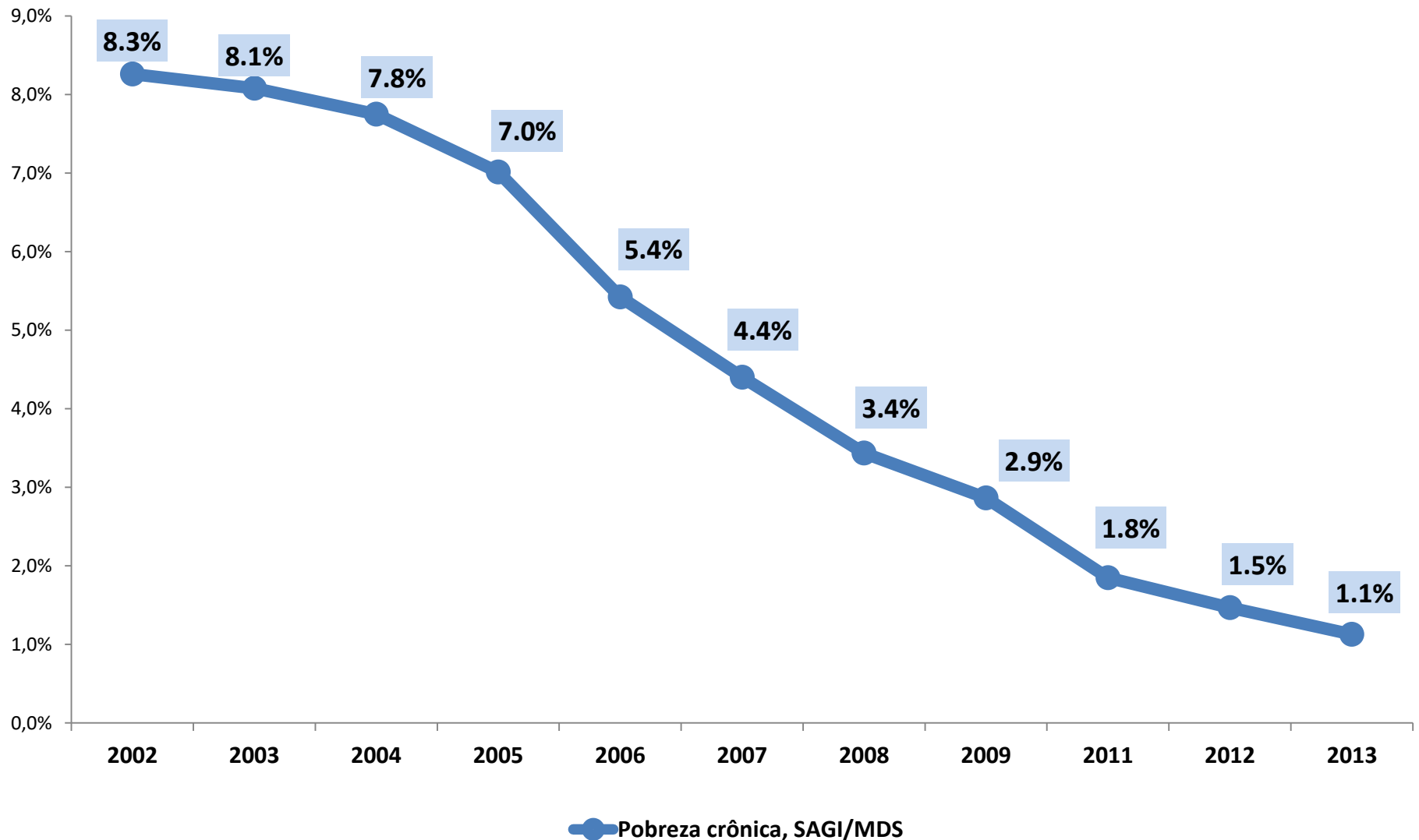
\*\* Monthly income per household

Source: PNAD/IBGE and NSCN/IBGE.

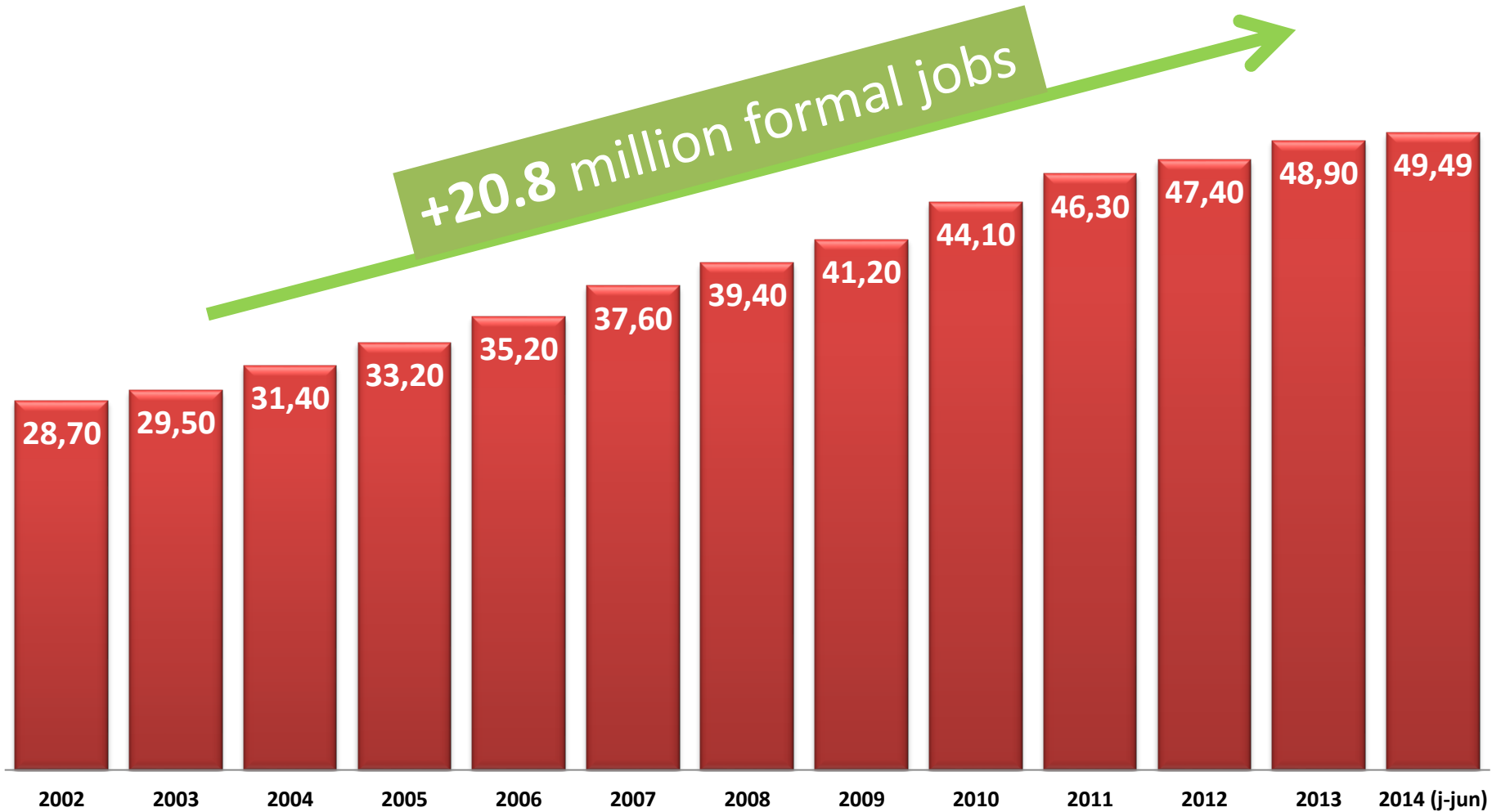
# Evolution rate (%) of monetary poverty



# Evolution of multidimensional poverty



# Evolution of formal jobs (millions)

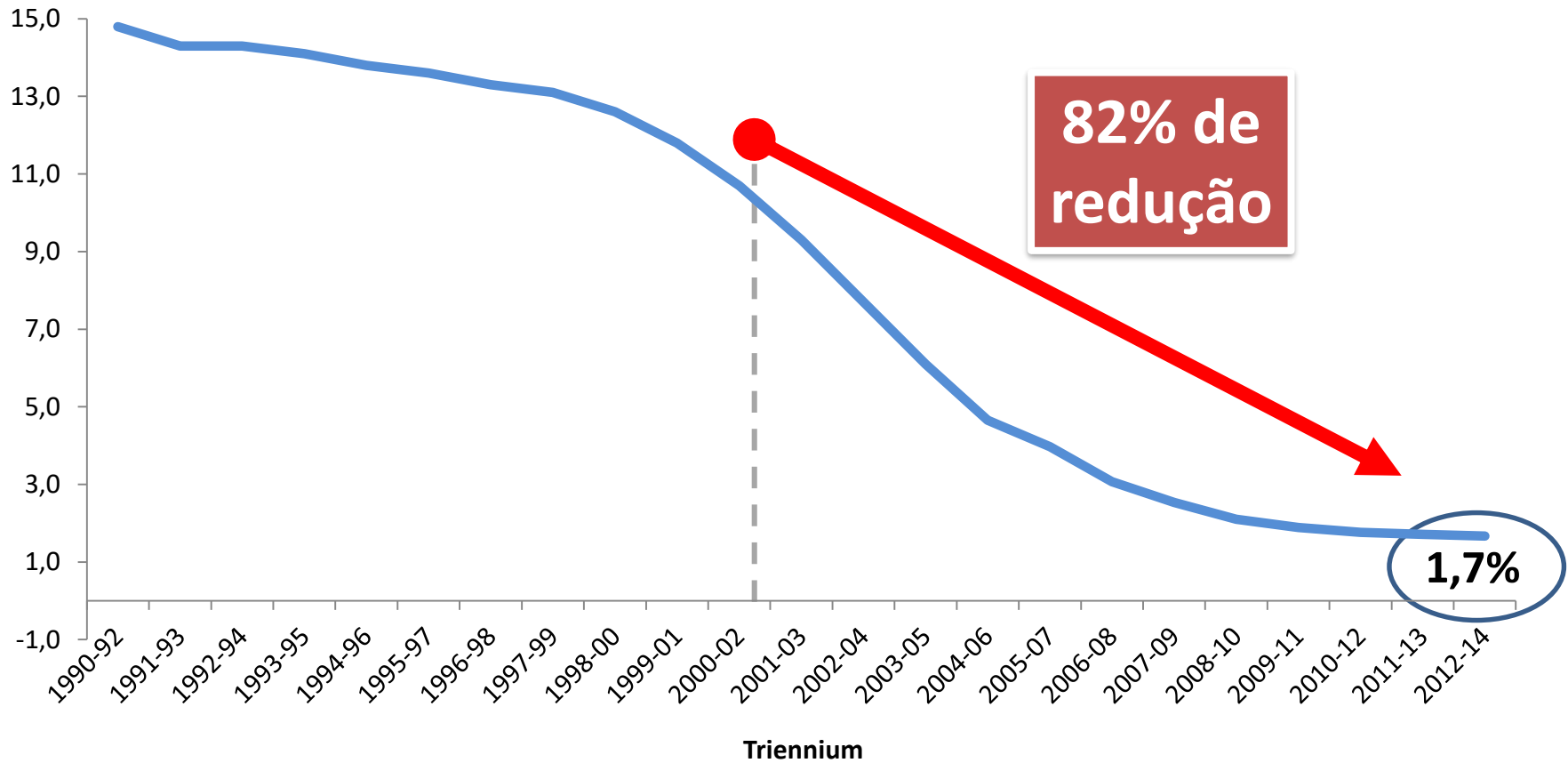




# Malnutrition

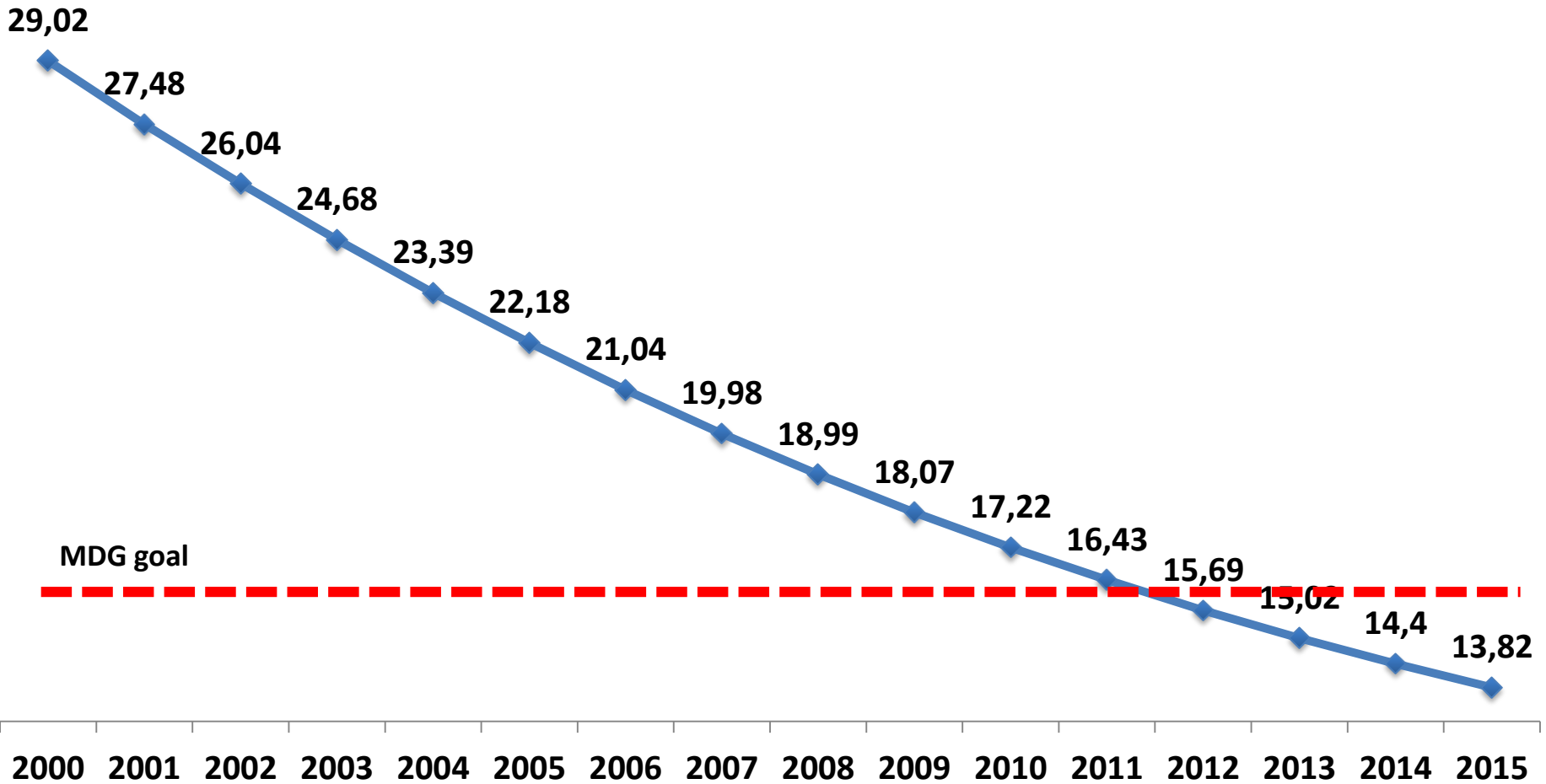
## BRAZIL - population malnutrition (%)

% Population

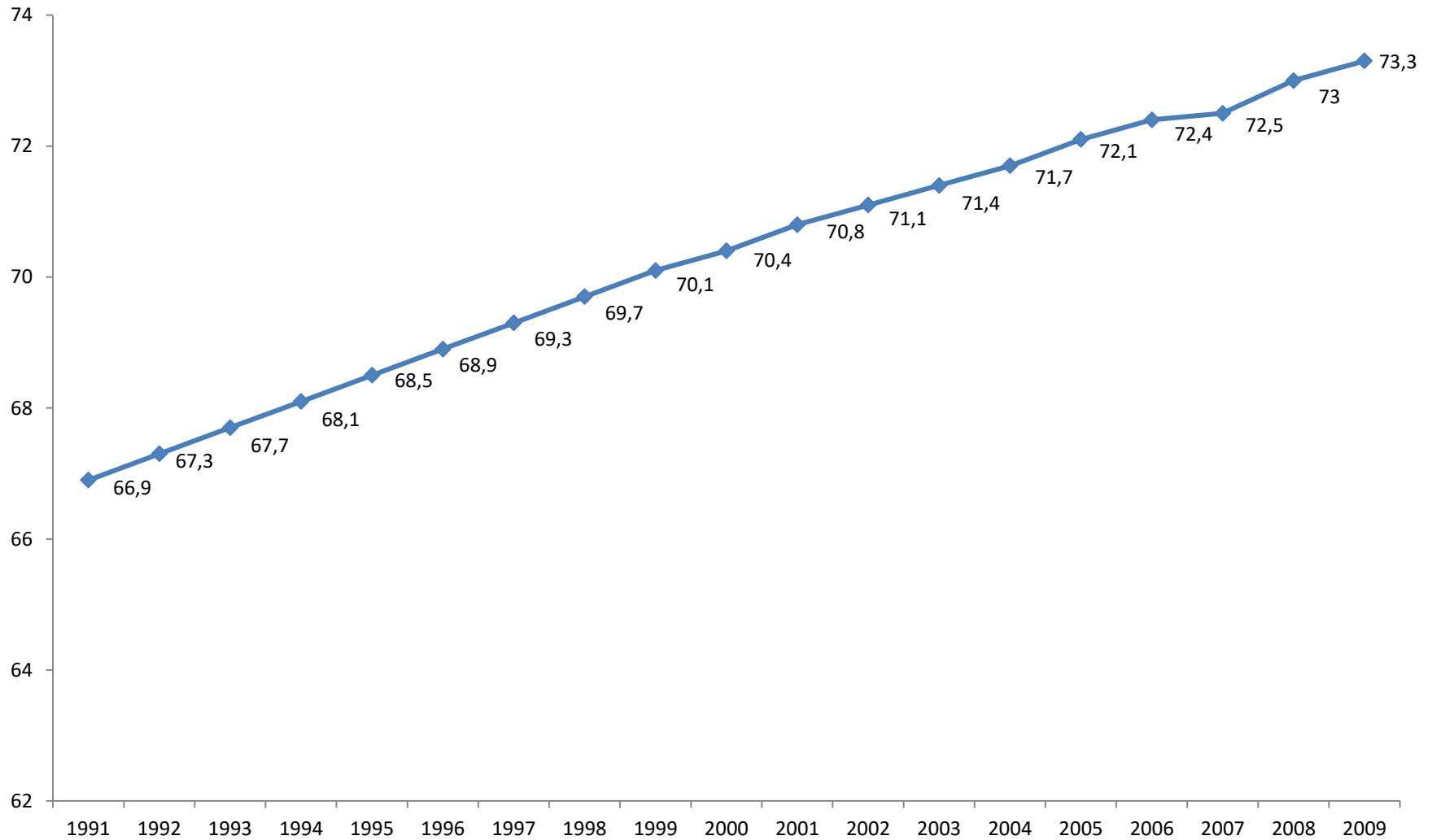


# Infant Mortality

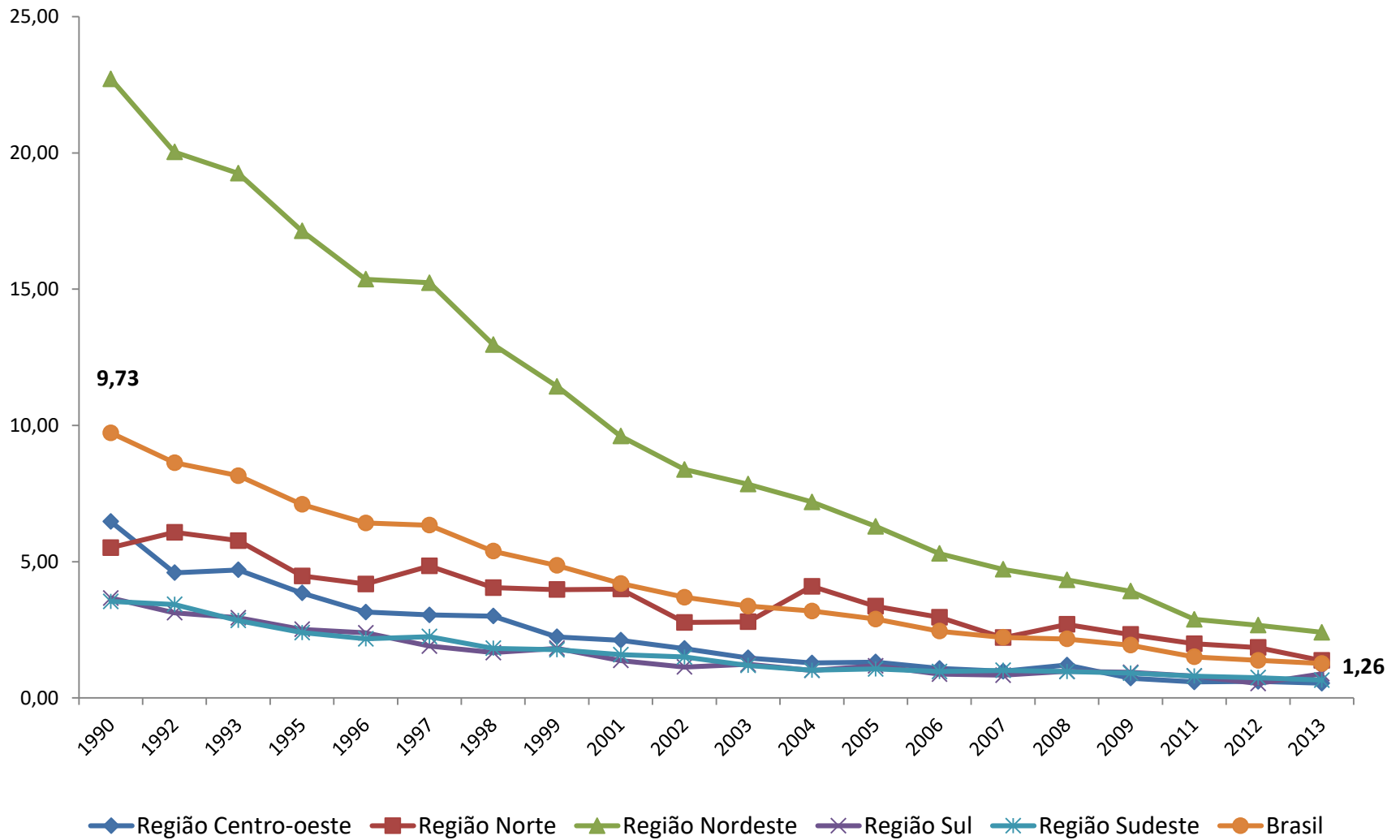
Rate per 1,000 live births



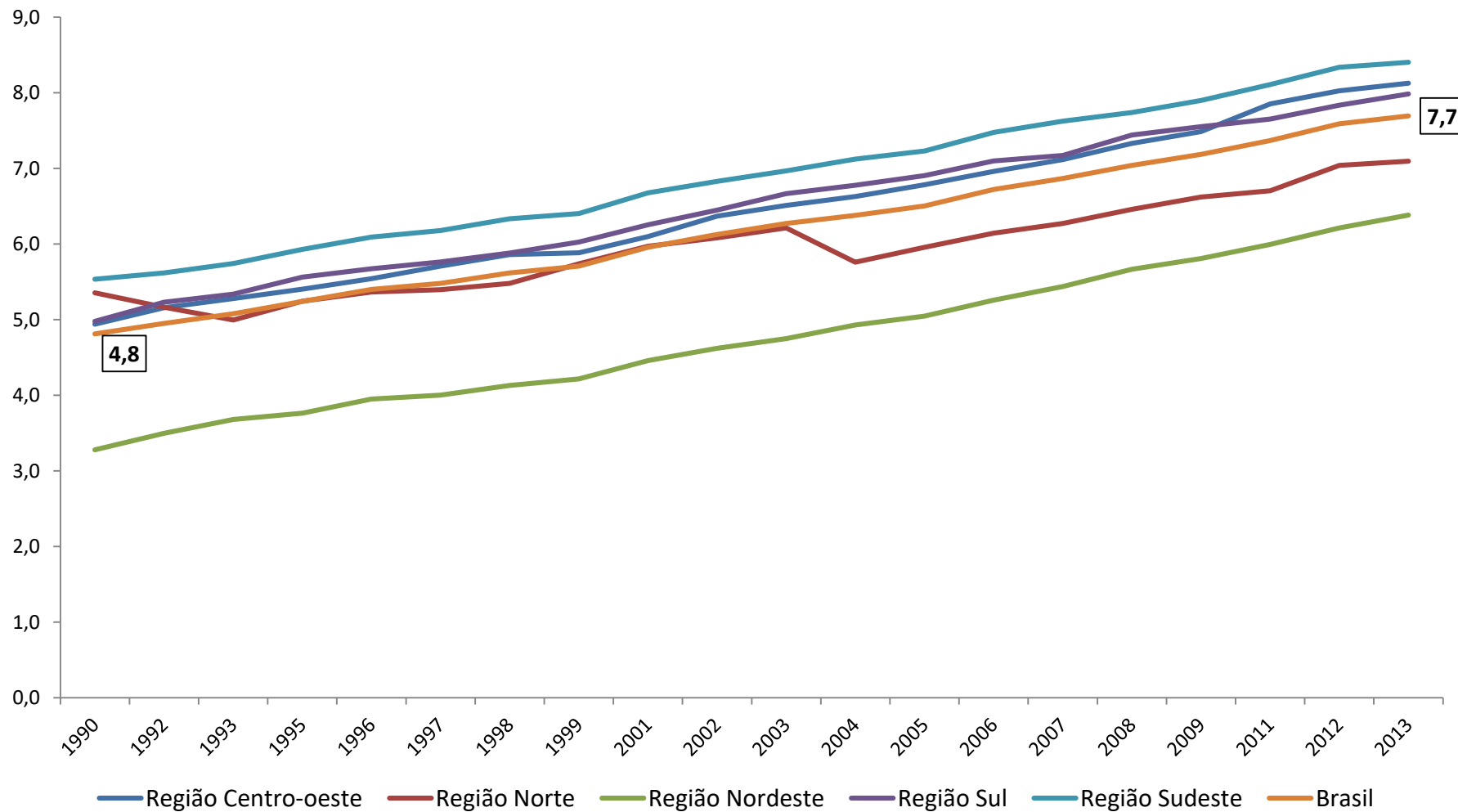
# Life Expectancy at birth



# Illiteracy (15 to 24 years old)



# Average years of schooling



# Challenges

---

- ✓ Social Policies financing : highly regressive tax structure ; *per capita* spending
- ✓ Equity Promotion
- ✓ Quality assurance: gigantic systems and heterogeneities
- ✓ Demographic transition : bonus ?
- ✓ "New " agenda : socio-environmental , youth, infancy, violence ...

**Thank you!**

[bsm@mds.gov.br](mailto:bsm@mds.gov.br)

[www.wwp.org.br](http://www.wwp.org.br)

