



SEMANA DE AVALIAÇÃO

gLOCAL

Partilhando conhecimento
local e global de avaliação

#gLocalEval2020

*Partilhe suas experiências.
Faça novas conexões.*

DE 1 A 5 DE 2020 DE JUNHO

Visite theclearinitiative.org

ORGANIZADA PELA:

clear



Centros de Aprendizagem em Avaliação e Resultados

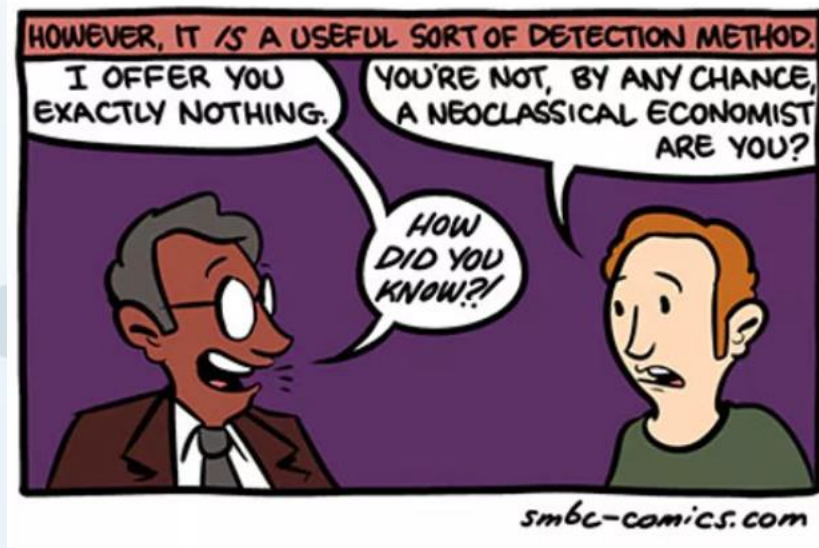
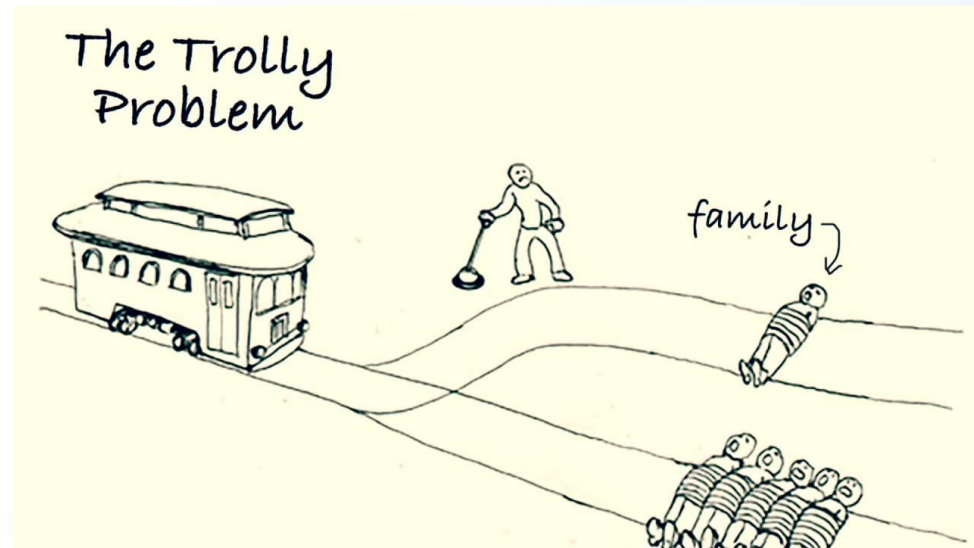
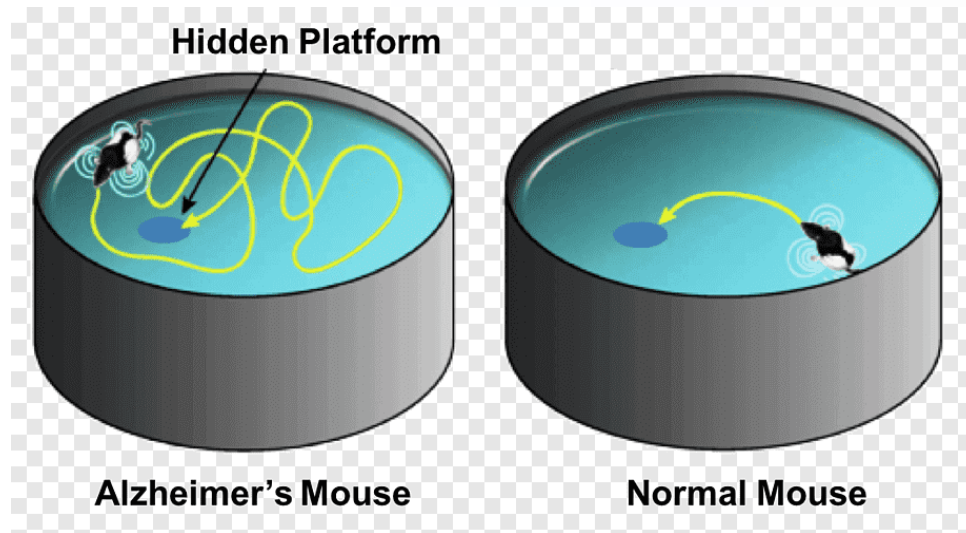
O que os métodos da abordagem comportamental podem ensinar para a prática da avaliação em políticas públicas?

Ricardo Lins Horta

Doutor em Direito (UnB) e Mestre em Neuropsicologia (UFMG)

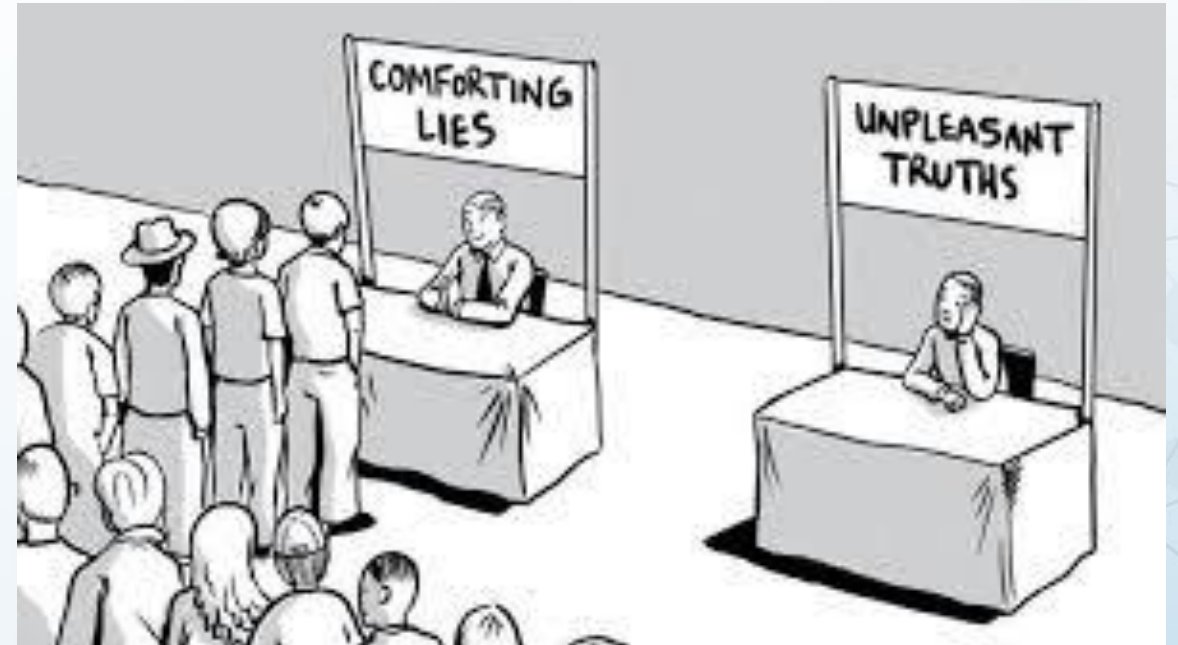
Especialista em Políticas Públicas e Gestão Governamental (EPPGG)

As ciências comportamentais se valem de uma multiplicidade de métodos de pesquisa



Cientistas, como os avaliadores de PPs, são humanos e, portanto, exibem vieses

- Viés de confirmação
- Otimismo excessivo
- Polarização de grupos
- Ilusão das pequenas amostras
- Etc.



CONVENED BY:

clear

Centers for Learning on Evaluation and Results





Linus Pauling



H 2,1																	He
Li 1,0	Be 1,6															Ne	
Na 0,9	Mg 1,2															Ar	
K 0,8	Ca 1,0	Sc 1,3	Ti 1,5	V 1,6	Cr 1,6	Mn 1,5	Fe 1,8	Co 1,9	Ni 1,9	Cu 1,9	Zn 1,6	Ga 1,6	Ge 1,8	As 2,0	Se 2,4	Br 2,8	Kr
Rb 0,8	Sr 1,0	Y 1,2	Zr 1,4	Nb 1,6	Mo 1,8	Tc 1,9	Ru 2,2	Rh 2,2	Pd 2,2	Ag 1,9	Cd 1,7	In 1,7	Sn 1,8	Sb 1,9	Te 2,1	I 2,5	Xe
Cs 0,7	Ba 0,9	La 1,0	Hf 1,3	Ta 1,5	W 1,7	Re 1,9	Os 2,2	Ir 2,2	Pt 2,2	Au 2,4	Hg 1,9	Tl 1,8	Pb 1,9	Bi 1,9	Po 2,0	At 2,1	Rn

Eletronegatividade

PEQUENA ← MÉDIA → ALTA

The New York Times

NEW YORK, SUNDAY, AUGUST 25, 1994

Making Nuclear Arms Easier Than It Looks, New Study Says

Stricter Limits Urged on Weapons-Grade Fuel

By WILLIAM J. BIRBAUM

Building a nuclear bomb takes so much time and effort that it is generally believed that the weapons-grade fuel is so difficult to produce that it is a natural barrier to proliferation. But a new study says that the process of producing weapons-grade fuel is easier than it appears to be.

The researchers, who report in the journal *Nature*, say that the process of producing weapons-grade fuel is easier than it appears to be because of the ease with which it can be produced in a laboratory setting. They say that the process of producing weapons-grade fuel is easier than it appears to be because of the ease with which it can be produced in a laboratory setting.

President Moves to Punish Castro for Cuban Exodus

Policy Responding to the Tide of Refugees May Increase the Worry of Cubans

By MICHAEL WINSTON

WASHINGTON, Aug. 24 — From the time Fidel Castro took power in 1959, the United States has been at odds with the Cuban leader. But now the tide of refugees fleeing Cuba has reached a new peak, and President Clinton is moving to punish the Cuban leader for the exodus.

Mr. Clinton said that the new policy would be to cut off the flow of Cuban refugees to the United States. He said that the new policy would be to cut off the flow of Cuban refugees to the United States.

N.A.A.C.P. Board Dismisses Group's Executive Director

By JENNIFER HARRIS

The board of the National Association for the Advancement of Colored People (N.A.A.C.P.) has dismissed its executive director, Jesse Jackson, after a vote of 12 to 5.

The board said that Mr. Jackson had been "grossly negligent" in his duties. It said that Mr. Jackson had been "grossly negligent" in his duties.

From Frequent-Flier Miles, Currency for the Earthbound

By JOHN ROBERT

Call them the Green Bucks of the air. Frequent-flyer miles, once the preserve of business travelers, are increasingly being regarded as the new cash of the 21st century.

Millions of people now spend their vacation time earning miles, which they can then use to pay for everything from airfare to hotel rooms.

Siberia: 5 Million Miles of Frozen Dreams

By MICHAEL WINSTON

CHERKIZOVO, Russia — There are 5 million miles of frozen dreams in the mountains of Siberia. They are the remains of a Soviet dream to build a canal through the mountains of Siberia.

The canal was supposed to be built to connect the Caspian Sea to the Arctic Ocean. It was supposed to be built to connect the Caspian Sea to the Arctic Ocean.

Linus C. Pauling Dies at 93; Chemist and Voice for Peace

By MICHAEL WINSTON

Linus C. Pauling, an American chemist and peace activist, died at his home in Corvallis, Ore., on Sunday.

Mr. Pauling was born in 1901. He was a chemist and a peace activist. He was a chemist and a peace activist.

Behavioural Government

Using behavioural science to improve how governments make decisions

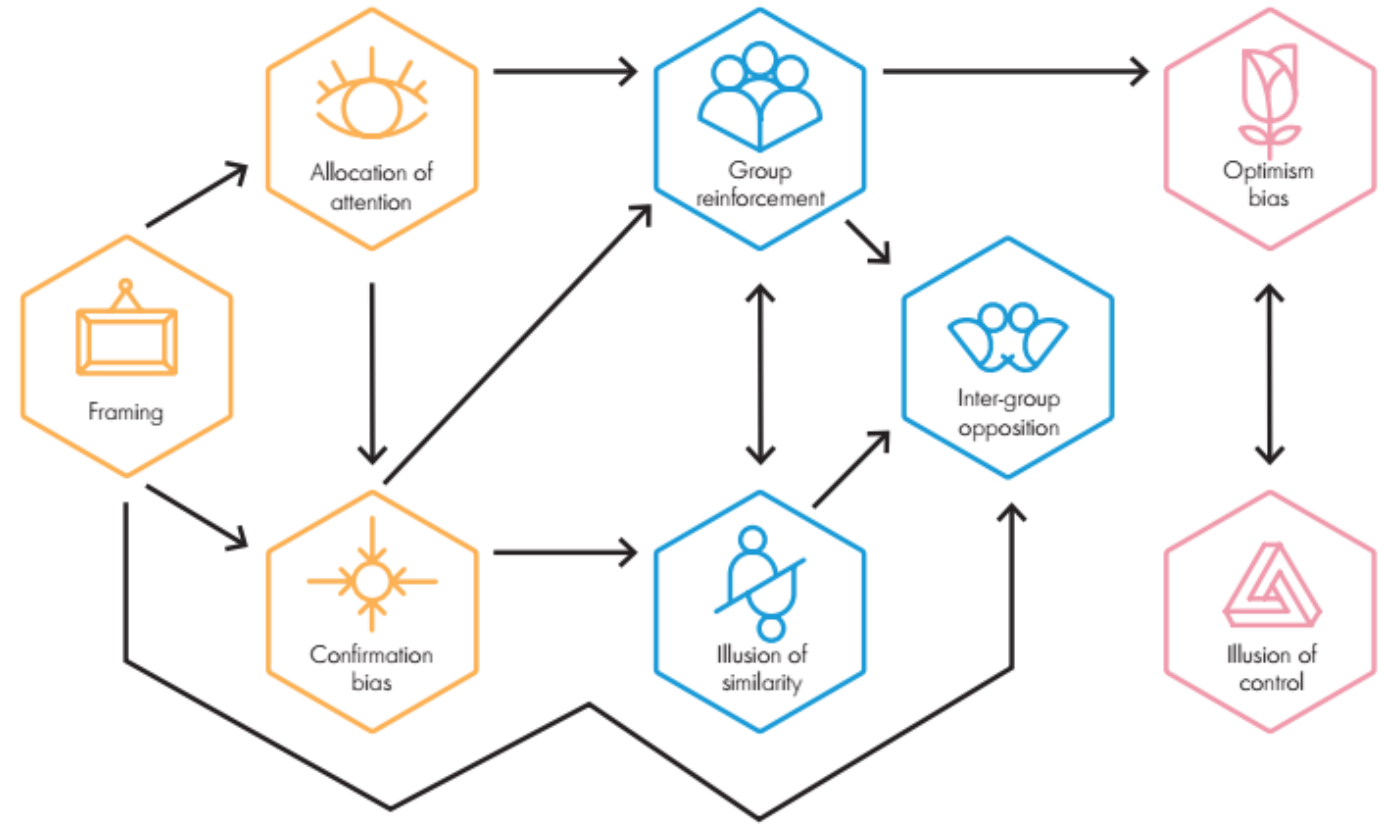
Michael Hallsworth / Mark Egan / Jill Rutter / Julian McGrae



Noticing

Deliberating

Executing





Recentemente, alerta-se que as ciências comportamentais passam por uma “crise de replicação” ...

Why Most Published Research Findings Are False

John P. A. Ioannidis



PLoS Medicine | www.plosmedicine.org

August 2005 | Volume 2 | Issue 8 | e124

PERSPECTIVES ON PSYCHOLOGICAL SCIENCE

Puzzlingly High Correlations in fMRI Studies of Emotion, Personality, and Social Cognition¹

Edward Vul,^{1,2} Christine Harris,² Piotr Winkielman,² & Harold Pashler²

¹Massachusetts Institute of Technology and ²University of California, San Diego

Volume 4—Number 3

False-Positive Psychology: Undisclosed Flexibility in Data Collection and Analysis Allows Presenting Anything as Significant

Psychological Science
22(11) 1359–1366
© The Author(s) 2011
Reprints and permission:
sagepub.com/journalsPermissions.nav
DOI: 10.1177/0956797611417632
<http://pss.sagepub.com>
SAGE

Joseph P. Simmons¹, Leif D. Nelson², and Uri Simonsohn¹

¹The Wharton School, University of Pennsylvania, and ²Haas School of Business, University of California, Berkeley

Power failure: why small sample size undermines the reliability of neuroscience

Katherine S. Button^{1,2}, John P. A. Ioannidis³, Claire Mokrysz¹, Brian A. Nosek⁴, Jonathan Flint⁵, Emma S. J. Robinson⁶ and Marcus R. Munafò¹



Mas terá sido mesmo uma “crise”?

- Exemplo: a questão da “validade ecológica” dos achados



The weirdest people in the world?

Joseph Henrich

Department of Psychology and Department of Economics, University of British Columbia, Vancouver V6T 1Z4, Canada

joseph.henrich@gmail.com

<http://www.psych.ubc.ca/~henrich/home.html>

Steven J. Heine

Department of Psychology, University of British Columbia, Vancouver V6T 1Z4, Canada

heine@psych.ubc.ca

Ara Norenzayan

Department of Psychology, University of British Columbia, Vancouver V6T 1Z4, Canada

ara@psych.ubc.ca

A screenshot of the Amazon Mechanical Turk website. The top navigation bar includes the Amazon Mechanical Turk logo and links for Overview, Features, Pricing, and Help. The main content area features the title "Amazon Mechanical Turk" in large white text on a dark background, followed by the tagline "Access a global, on-demand, 24x7 workforce" and a yellow button that says "Get started with Amazon Mechanical Turk".

amazon mechanical turk

Overview Features Pricing Help

Amazon Mechanical Turk

Access a global, on-demand, 24x7 workforce

Get started with Amazon Mechanical Turk

Running experiments on Amazon Mechanical Turk

Gabriele Paolacci*

Advanced School of Economics, Ca' Foscari University of Venice

Jesse Chandler

Woodrow Wilson School of Public and International Affairs, Princeton University

Panagiotis G. Ipeirotis


Leonard N. Stern School of Business, New York University

Political Science Research and Methods (2020), page 1 of 16
doi:10.1017/psrm.2020.6



ORIGINAL ARTICLE

The shape of and solutions to the MTurk quality crisis

Ryan Kennedy¹ , Scott Clifford^{1*} , Tyler Burleigh², Philip D. Waggoner³, Ryan Jewell¹
and Nicholas J. G. Winter⁴ 

Mas terá sido mesmo uma “crise”?

- O estímulo à colaboração científica

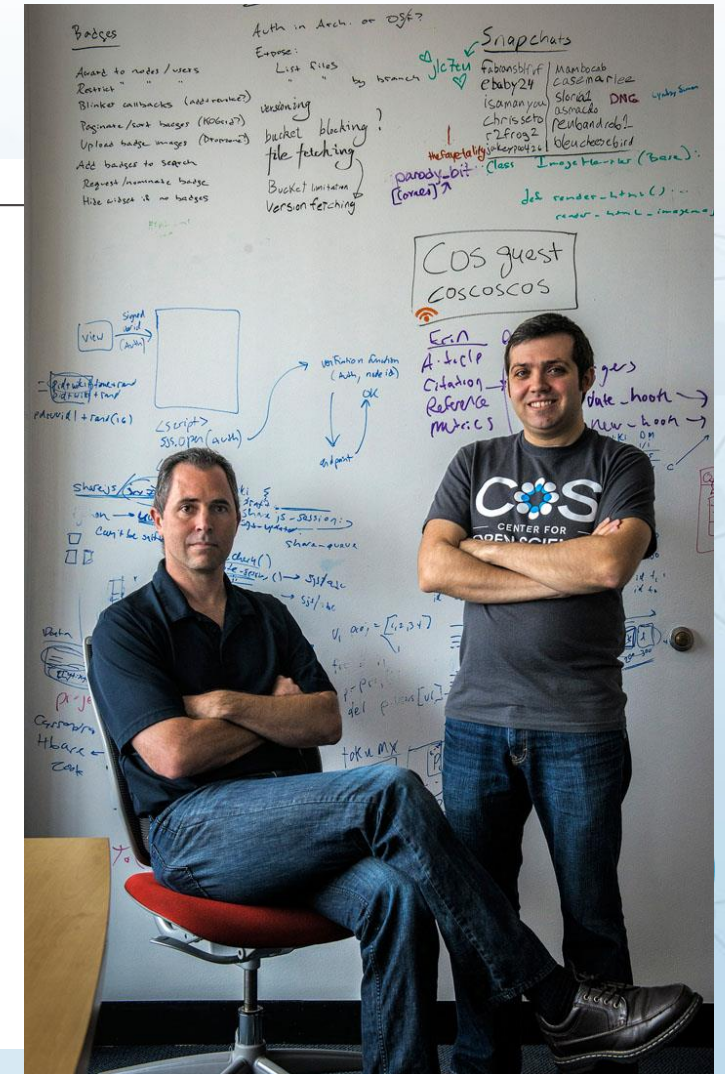
RESEARCH ARTICLE SUMMARY

PSYCHOLOGY

Estimating the reproducibility of psychological science

Open Science Collaboration*

SCIENCE sciencemag.org 28 AUGUST 2015 • VOL 349 ISSUE 6251



There's a better way to manage your research

OSF is a free, open platform to support your research and enable collaboration.

Get started

How OSF supports your research



Search and Discover

Find papers, data, and materials to inspire your next research project. Search public projects to build on the work of others and find new collaborators.



Design Your Study

Start a project and add collaborators, giving them access to protocols and other research materials. Built-in version control tracks the evolution of your study.



Collect and Analyze Data

Store data, code, and other materials in OSF Storage, or connect your Dropbox or other third-party account. Every file gets a unique, persistent URL for citing and sharing.



Publish Your Reports

Share papers in OSF Preprints or a community-based preprint provider, so others can find and cite your work. Track impact with metrics like downloads and view counts.



A free preprint service for the psychological sciences
Maintained by [The Society for the Improvement of Psychological Science](#)
Powered by [OSF Preprints](#)

Crise ou aperfeiçoamento generalizado de métodos?

- Preocupação crescente com a “meta-ciência”
- Maior atenção à **ética** na pesquisa e a fraudes nos dados
- **Pré-registro** de protocolos de pesquisa
- Bases de dados coletados em pesquisa **abertas** para a comunidade
- **Melhores métodos** estatísticos
- Maior esforço para tentar **replicar** achados de estudos originais
- Medidas para mitigar o “**viés de publicação**”
- O duro questionamento aos **periódicos pagos** e fechados
- Maior abertura ao questionamento de “vacas sagradas” do campo

O que isso pode ensinar ao processo avaliativo?

- É preciso mitigar o viés de confirmação dos avaliadores!
- Revalorização das teorias comportamentais: a “rede nomológica”
- A necessária interação entre teorias e testagem/avaliação
- Busca por melhores amostras e maior validade ecológica na testagem, para que achados sejam **generalizáveis**
- A sempre complexa interação entre avaliadores/burocratas e políticos
- A **incerteza** está sempre presente: faz parte do processo científico



Boris Johnson #StayHomeSaveLives @BorisJohnson · 12 de abr

It is hard to find the words to express my debt to the NHS for saving my life.

The efforts of millions of people across this country to stay home are worth it. Together we will overcome this challenge, as we have overcome so many challenges in the past. #StayHomeSaveLives



26,2 mil 61,8 mil 268,6 mil

Para acompanhar melhor esse debate

Statistical Modeling, Causal Inference, and Social Science

HOME

BOOKS

BLOGROLL

<https://statmodeling.stat.columbia.edu/>



CONVENED BY:

clear

Centers for Learning on Evaluation and Results



Para acompanhar melhor esse debate

Discover

LOGIN

THE SCIENCES | MIND | TECHNOLOGY | HEALTH | ENVIRONMENT | PLANET EARTH

Neuroskeptic



THE SCIENCES

Civil Disobedience in
Science Publishing?



THE SCIENCES

Do Peer Reviewers Prefer
Significant Results?



MIND

The Dream of
'Disconnected
Psychology'

CONVENED BY:

clear



Centers for Learning on Evaluation and Results



SEMANA DE AVALIAÇÃO
gLOCAL
Partilhando conhecimento
local e global de avaliação

Perguntas?

ORGANIZADA PELA:

clear



Centros de Aprendizagem em Avaliação e Resultados



SEMANA DE AVALIAÇÃO
gLOCAL
Partilhando conhecimento
local e global de avaliação

Obrigado

ORGANIZADA PELA:

clear



Centros de Aprendizagem em Avaliação e Resultados



SEMANA DE AVALIAÇÃO
gLOCAL
Partilhando conhecimento
local e global de avaliação

Compartilhe Sua Experiência!
#gLocalEval2020

ORGANIZADA PELA:

clear



Centros de Aprendizagem em Avaliação e Resultados